

PHIFER

Phiferglass®

Insect Screening

Colmallas sa.

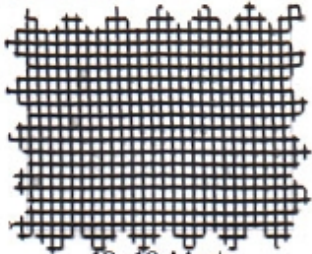
www.colmallas.com

PBX: (1) 360 8211 Bogotá,, D.C. Colombia

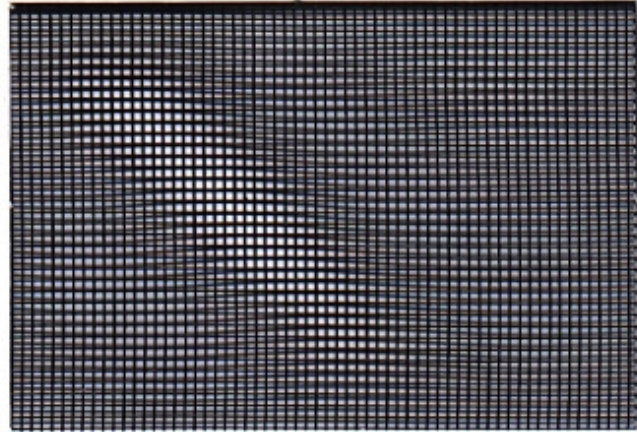
## Standard Window & Door Insect Screening

### 18x16 Mesh

■ This standard fiberglass screen is the mesh applied in most windows and doors. Easily fabricated, this high-quality standard mesh is the preferred insect screening in the fenestration industry.



18x16 Mesh  
Silver Gray

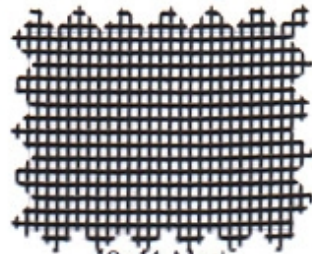


18x16 Mesh  
Charcoal

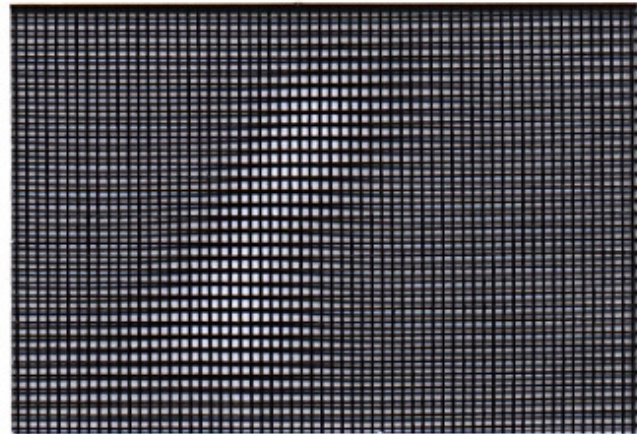
## Pool, Patio & Porch Insect Screening

### 18x14 Mesh

■ Pool, Patio and Porch Screen is stronger than Standard Window and Door Screen, making it the ideal screen for large openings such as screen porches, and patio and pool enclosures. Designed for applications where extra strength is desirable.



18x14 Mesh  
Silver Gray



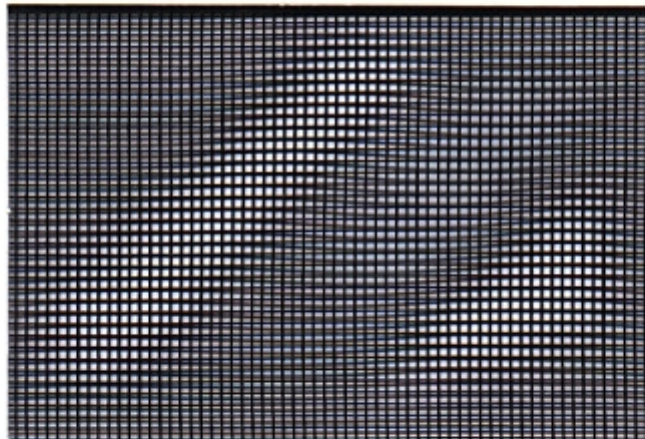
18x14 Mesh  
Charcoal

PHIFER

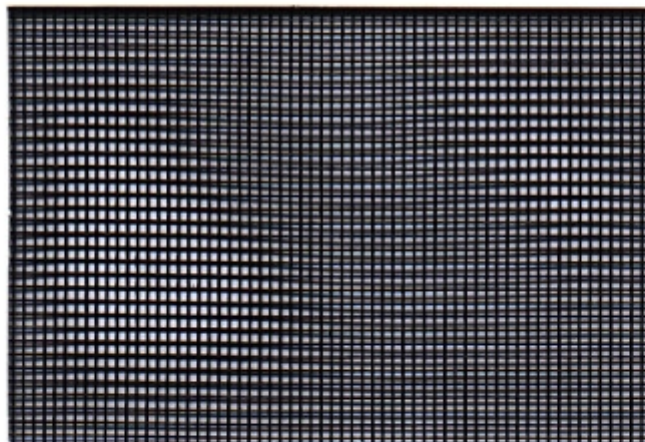
# Phiferglass® Insect Screening



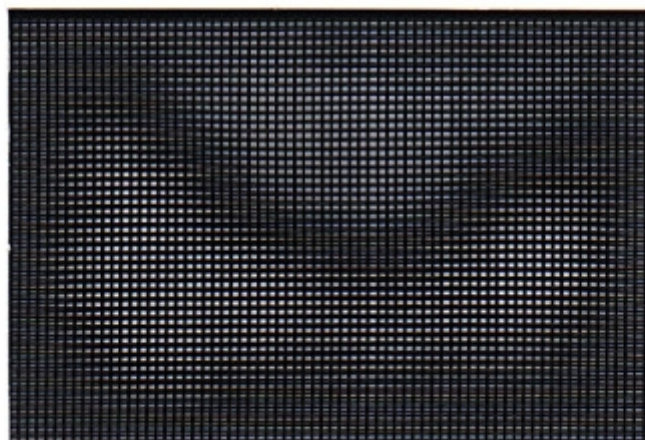
Calle 12 No. 37-61 PBX: (1) 360 8211  
Bogotá D.C., Colombia.



18x16 Mesh  
Charcoal



18x14 Mesh  
Charcoal



20x20 Mesh  
Charcoal

## Specifications

■ Phifer offers a complete selection of fiberglass woven insect screening materials for all your requirements. Phiferglass Screen is woven from permanent glass yarn, which has been coated with a protective vinyl to ensure lasting beauty, color and flexibility. It is produced under the most exacting conditions to meet rigid specifications. Phiferglass Screen will not rust, corrode or stain.

**Standard Colors:** Charcoal and Silver Gray

**Widths:** From 24" to 84" (60.9cm to 213.4cm). Inquire about special widths for each color/type.

**Roll Lengths:**

18x16 Mesh: 800' (243.84M), 600' (182.8M), 300' (91.4M), 100' (30.48M), 25' (7.62M) and 84" (213.4cm) DIY rolls

18x14 Mesh: 100' (30.48M)

20x20 Mesh: 100' (30.48M)

**Packaging:** 800' and 600' rolls - individually wrapped in protective plastic; 100' rolls - individually wrapped in paper or plastic; 25' rolls - 8 rolls of one width per box; DIY rolls - 8 rolls of one width per carton

*Phifer offers a full line of aluminum, solar control and pet-resistant screening products.*



**PHIFER WIRE PRODUCTS, INC.**

Presidential "E Star" Award For Export Excellence  
Founded 1962 By REESE PHIFER

P. O. BOX 1700 • TUSCALOOSA, ALABAMA 35403-1700 U.S.A.  
PHONE: 205/345-2120 • TOLL FREE 1/800-633-5955  
FAX: 205/759-4450 • www.phifer.com

SALES OFFICES/WAREHOUSES:  
Phifer Western (California) • Phifer Dallas  
Phifer Florida • Phifer Salt Lake City  
Phifer Europe (Italy) • Phifer Korea



**phiferglass**<sup>®</sup>  
FIBERGLASS INSECT SCREENING

#### PHIFERGLASS INSECT SCREENING

Phiferglass is the virtually "carefree" insect screening. It is woven from remarkably strong permanent glass yarn coated with a protective vinyl to ensure beauty, color and flexibility.

#### QUALITY

Phiferglass is manufactured under the most exacting conditions and specifications to assure the highest quality insect screening possible. Colors are consistent and the woven mesh is uniform.

Phiferglass is noncombustible and will not rust, rot, corrode, shrink, scratch or stain.

#### COLOR

Phiferglass is available in a rainbow of decorator colors to complement any window, door or enclosure. This modern carefree material is easy to install, requires a minimum of maintenance and is long-lasting.

#### AVAILABILITY

For immediate shipment anywhere in the world contact your representative.

**Colmallas sa.**<sup>®</sup>



#### THE PHIFER STORY

Phifer Wire Products was established in 1952 in Tuscaloosa, Alabama, as a weaver of aluminum insect screening. Today the company manufactures and supplies a broad line of precision woven products and aluminum products throughout the 50 United States of America and in over 100 countries worldwide.

All Phifer products are manufactured in our state-of-the-art facilities in Tuscaloosa, Alabama. Stocking warehouses and sales offices are located in City of Industry, California; Dallas, Texas; Clearwater, Florida; and Chicago, Illinois, to offer quick and convenient delivery. In addition, the Phifer fleet of trucks delivers direct to customers from coast-to-coast and to all major ports for exporting.

Today, the Phifer line of products includes aluminum and fiberglass insect screening; Phifer SunScreen<sup>®</sup>, ShadesScreen<sup>®</sup> and SunTex<sup>®</sup> exterior shading products; Phifer SheerWeave<sup>®</sup> interior sun control fabric; Phifertex<sup>®</sup> vinyl-coated polyester fabric; Arlyn<sup>®</sup> fabric and yarns; Acrylitex<sup>™</sup> brand fabric; aluminum round wire; vent mesh; vinyl-coated yarns; and related woven wire products.



**PHIFER WIRE PRODUCTS, INC.**

Presidential "E Star" Award For Export Excellence

Founded 1952 By REESE PHIFER

P. O. 1700 • Tuscaloosa, Alabama 35403-1700  
Toll Free 1/800-633-5955 (U.S.A.) • 1/800-547-8797 (Canada)  
FAX: 205/759-4450 • Telex: 261326 (PHIF UR)  
Outside U.S.A. and Canada 205/345-2120

® Registered trademarks of Phifer Wire Products, Inc.  
™ Trademark of Phifer Wire Products, Inc.  
© Phifer Wire Products, Inc., 1996

**phiferglass**<sup>®</sup>  
FIBERGLASS INSECT SCREENING

**Colmallas sa.**<sup>®</sup>



**PHIFER WIRE PRODUCTS, INC.**

Presidential "E Star" Award For Export Excellence  
Founded 1952 By REESE PHIFER

[www.colmallas.com](http://www.colmallas.com)